

ASBESTOS CONTAINING MATERIALS SURVEY **DEMOLITION REPORT**

TULLIO ENVIRONMENTAL SERVICES

833 S. Vance St. Suite 102
Lakewood, Colorado 80226
(720) 445-1066
Consulting Firm #18820
tullioenviro@gmail.com

February 22nd, 2022

Delores County Schools

Re: 425 N. Main St., Dove Creek, Colorado The newer additions on the back of the building only

On January 28th, 2022 I Robert Tullio a certified State of Colorado Asbestos Inspector, Number 4589 collected and submitted for analysis 75 bulk samples for P. L. M. This report is for the sole purpose of demolishing this one story block framed addition. The hot water heater and the heating unit is not insulated. In section B chemistry labs all counter tops are assumed transite.

- Check footnotes

LIST OF HOMOGENEOUS AREAS FOR PLM SECTION A

Class I, Plaster white in color with a smooth texture located in the lounge on the walls and ceiling, this area is accessible with a high potential for disturbance, in good condition approximately 400 Sq. Ft. * (F) Category 6 sample number SMW-001 through SMW-003

Class I, Plaster white in color with a heavy texture located in the north bathroom on the walls, this area is accessible with a high potential for disturbance, in good condition approximately 60 Sq. Ft. * (F) sample number SMW-004 through SMW-006

Class I, Plaster white in color with a knock down texture located in the south bathroom on the walls and ceiling and in the north bathroom on the ceiling, this area is accessible with a high potential for disturbance, in damaged condition approximately 240 Sq. Ft. * (F) sample number SMW-007 through SMW-009

Class I, Drywall white in color with a knock down texture located in the main office area on the walls and ceiling, this area is accessible with a high potential for disturbance, in good condition approximately 2600 Sq. Ft. * (F) sample number SMW-010 through SMW-014

Class I, Block filler white in color with a knock down texture located on the east and west walls, this area is accessible with a high potential for disturbance, in good condition approximately 1200 Sq. Ft. * (F) sample number SMW-015 through SMW-019

Class III, Carpet gray in color with a fluffy texture located on the floor, this area is accessible with a high potential for disturbance, in good condition approximately 6000 Sq. Ft. * (N/F) sample number FL-020 through FL-022

Class I, Drywall white in color with a knock down texture located in the old board room on the walls and ceilings, this area is accessible with a high potential for disturbance, in good condition approximately 1150 Sq. Ft. * (F) sample number SMW-023 through SMW-027

Class I, Drywall white in color with a smooth texture located in the board room on the west wall, this area is accessible with a high potential for disturbance, in good condition approximately 800 Sq. Ft. * (F) sample number SMW-028 through SMW-030

Class I, Drywall white in color with a trialed texture located in the boiler room and maintenance room on the ceiling, this area is accessible with a high potential for disturbance, in good condition approximately 120 Sq. Ft. * (F) sample number SMC-031 through SMC-033

Class I, Drywall white in color with a knock down texture located in the entry hall on the ceiling, this area is accessible with a high potential for disturbance, in good condition approximately 940 Sq. Ft. * (F) sample number SMC-034 through SMC-036

Class III, Ceiling tile white in color with a smooth texture located in the bathroom on the ceiling, this area is accessible with a high potential for disturbance, in good condition approximately 600 Sq. Ft. * (F) sample number CT-037 through CT-039

Class I, Drywall white in color with a knock down texture located in the bathroom on the walls, this area is accessible with a high potential for disturbance, in good condition approximately 800 Sq. Ft. * (F) sample number SMW-040 through SMW-042

Class III, Joint compound/drywall white in color with a smooth texture located on some of the walls and ceilings, this area is accessible with a high potential for disturbance, in good condition (N/F) sample number JC-043 through JC-045

Class III, Flooring white in color with a smooth texture located in the bathroom on the floor, this area is accessible with a high potential for disturbance, in good condition approximately 600 Sq. Ft. * (N/F) sample number FL-046 through FL-048

LIST OF HOMOGENEOUS AREAS FOR PLM SECTION B

Class I, Drywall white in color with a knock down texture located in the hallway and offices on the walls and ceilings, this area is accessible with a high potential for disturbance, in good condition approximately 3400 Sq. Ft. * (F) sample number SMW-001 through SMW-005

Class III, Attic insulation gray in color with a hard texture located in the attic, this area is accessible with a high potential for disturbance, in good condition (N/F) sample number INS-006 through INS-008

Class I, Drywall white in color with a smooth texture located in the maintenance office on the walls and ceilings, this area is accessible with a high potential for disturbance, in good condition approximately 1200 Sq. Ft. * (F) sample number SMW-009 through SMW-013

Class I, Drywall white in color with a knock down texture located in the storage room on the walls and ceiling, this area is accessible with a high potential for disturbance, in good condition approximately 2400 Sq. Ft. * (F) sample number SMW-014 through SMW-018

Class III, Flooring yellow in color with a smooth texture located in the chemistry lab on the floor, this area is accessible with a high potential for disturbance, in good condition approximately 400 Sq. Ft. * (N/F) sample number FL-019 through FL-021

Class III, Flooring tile gray in color with a smooth texture located in the chemistry lab on the floor, this area is accessible with a high potential for disturbance, in good condition approximately 50 Sq. Ft. * (N/F) sample number FL-022 through FL-024

Class III, Chalk boards gray in color with a smooth texture located on all of chalk boards, this area is accessible with a high potential for disturbance, in good condition approximately 700 Sq. Ft. * (N/F) sample number CB-025 through CB-027

SUMMARY OF SAMPLED AREAS AND MATERIAL SECTION A

1 bulk sample taken from the Lounge north wall sample number SMW-001
1 bulk sample taken from the Lounge north wall sample number SMW-002
1 bulk sample taken from the Lounge south wall sample number SMW-003

1 bulk sample taken from the North bathroom west wall sample number SMW-004
1 bulk sample taken from the North bathroom west wall sample number SMW-005
1 bulk sample taken from the North bathroom west wall sample number SMW-006

1 bulk sample taken from the South bathroom north wall sample number SMW-007
1 bulk sample taken from the South bathroom east wall sample number SMW-008
1 bulk sample taken from the South bathroom south wall sample number SMW-009

1 bulk sample taken from the Main office north wall sample number SMW-010
1 bulk sample taken from the Main office south wall sample number SMW-011
1 bulk sample taken from the East office north wall sample number SMW-012
1 bulk sample taken from the East office south wall sample number SMW-013
1 bulk sample taken from the Big office north wall sample number SMW-014

1 bulk sample taken from the Main office east wall sample number SMW-015
1 bulk sample taken from the Main office west wall sample number SMW-016
1 bulk sample taken from the East office east wall sample number SMW-017
1 bulk sample taken from the East office west wall sample number SMW-018
1 bulk sample taken from the Big office east wall sample number SMW-019

1 bulk sample taken from the Main area flooring sample number FL-020
1 bulk sample taken from the Main area flooring sample number FL-021
1 bulk sample taken from the Main area flooring sample number FL-022

1 bulk sample taken from the Old board room east wall sample number SMW-023
1 bulk sample taken from the Old board room east wall sample number SMW-024
1 bulk sample taken from the Old board room east wall sample number SMW-025
1 bulk sample taken from the Entry hall north wall sample number SMW-026
1 bulk sample taken from the Entry hall north wall sample number SMW-027

1 bulk sample taken from the Board room west wall sample number SMW-028
1 bulk sample taken from the Board room west wall sample number SMW-029
1 bulk sample taken from the Board room west wall sample number SMW-030

1 bulk sample taken from the Boiler room ceiling sample number SMC-031
1 bulk sample taken from the Boiler room ceiling sample number SMC-032
1 bulk sample taken from the Boiler room ceiling sample number SMC-033

1 bulk sample taken from the Entry hall ceiling sample number SMC-034
1 bulk sample taken from the Entry hall ceiling sample number SMC-035
1 bulk sample taken from the Entry hall ceiling sample number SMC-036

1 bulk sample taken from the Bathroom ceiling sample number CT-037
1 bulk sample taken from the Bathroom ceiling sample number CT-038
1 bulk sample taken from the Bathroom ceiling sample number CT-039

1 bulk sample taken from the Bathroom south wall sample number SMW-040
1 bulk sample taken from the Bathroom south wall sample number SMW-041
1 bulk sample taken from the Bathroom south wall sample number SMW-042

1 bulk sample taken from the Joint compound/drywall sample number JC-043
1 bulk sample taken from the Joint compound/drywall sample number JC-044
1 bulk sample taken from the Joint compound/drywall sample number JC-045

1 bulk sample taken from the Bathroom flooring sample number FL-046
1 bulk sample taken from the Bathroom flooring sample number FL-047
1 bulk sample taken from the Bathroom flooring sample number FL-048

SUMMARY OF SAMPLED AREAS AND MATERIALS SECTION B

1 bulk sample taken from the Hallway north wall sample number SMW-001
1 bulk sample taken from the Hallway south wall sample number SMW-002
1 bulk sample taken from the Hallway north wall sample number SMW-003
1 bulk sample taken from the Hallway south wall sample number SMW-004
1 bulk sample taken from the Hallway north wall sample number SMW-005

1 bulk sample taken from the Attic insulation sample number INS-006
1 bulk sample taken from the Attic insulation sample number INS-007
1 bulk sample taken from the Attic insulation sample number INS-008

1 bulk sample taken from the Maintenance office north wall sample number SMW-009
1 bulk sample taken from the Maintenance office south wall sample number SMW-010
1 bulk sample taken from the Maintenance office west wall sample number SMW-011

1 bulk sample taken from the Maintenance office east wall sample number SMW-012
1 bulk sample taken from the Maintenance office east wall sample number SMW-013

1 bulk sample taken from the Storage west wall sample number SMW-014
1 bulk sample taken from the Storage west wall sample number SMW-015
1 bulk sample taken from the Storage north wall sample number SMW-016
1 bulk sample taken from the Storage east wall sample number SMW-017
1 bulk sample taken from the Storage south wall sample number SMW-018

1 bulk sample taken from the Chemistry laboratory flooring sample number FL-019
1 bulk sample taken from the Chemistry laboratory flooring sample number FL-020
1 bulk sample taken from the Chemistry laboratory flooring sample number FL-021

1 bulk sample taken from the Chemistry laboratory flooring sample number FL-022
1 bulk sample taken from the Chemistry laboratory flooring sample number FL-023
1 bulk sample taken from the Chemistry laboratory flooring sample number FL-024

1 bulk sample taken from the Chalk boards sample number CB-025
1 bulk sample taken from the Chalk boards sample number CB-026
1 bulk sample taken from the Chalk boards sample number CB-027

SUMMARY OF ANALYSIS OF SAMPLES FOR SECTION A

Sample number SMW-001 contains No Asbestos
Sample number SMW-002 contains No Asbestos
Sample number SMW-003 contains 2% Chrysotile Asbestos

Sample number SMW-004 contains No Asbestos
Sample number SMW-005 contains No Asbestos
Sample number SMW-006 contains No Asbestos

Sample number SMW-007 contains No Asbestos
Sample number SMW-008 contains No Asbestos
Sample number SMW-009 contains No Asbestos

Sample number SMW-010 contains No Asbestos
Sample number SMW-011 contains No Asbestos
Sample number SMW-012 contains No Asbestos
Sample number SMW-013 contains No Asbestos
Sample number SMW-014 contains No Asbestos

Sample number SMW-015 contains No Asbestos
Sample number SMW-016 contains No Asbestos
Sample number SMW-017 contains No Asbestos
Sample number SMW-018 contains No Asbestos
Sample number SMW-019 contains No Asbestos

Sample number FL-020 contains No Asbestos
Sample number FL-021 contains No Asbestos

Sample number FL-022 contains No Asbestos

Sample number SMW-023 contains No Asbestos
Sample number SMW-024 contains No Asbestos
Sample number SMW-025 contains No Asbestos
Sample number SMW-026 contains No Asbestos
Sample number SMW-027 contains No Asbestos

Sample number SMW-028 contains No Asbestos
Sample number SMW-029 contains No Asbestos
Sample number SMW-030 contains No Asbestos

Sample number SMC-031 contains No Asbestos
Sample number SMC-032 contains No Asbestos
Sample number SMC-033 contains No Asbestos

Sample number SMC-034 contains No Asbestos
Sample number SMC-035 contains No Asbestos
Sample number SMC-036 contains No Asbestos

Sample number CT-037 contains No Asbestos
Sample number CT-038 contains No Asbestos
Sample number CT-039 contains No Asbestos

Sample number SMW-040 contains No Asbestos
Sample number SMW-041 contains No Asbestos
Sample number SMW-042 contains No Asbestos

Sample number JC-043 contains No Asbestos
Sample number JC-044 contains No Asbestos
Sample number JC-045 contains No Asbestos

Sample number FL-046 contains No Asbestos
Sample number FL-047 contains No Asbestos
Sample number FL-048 contains No Asbestos

SUMMARY OF ANALYSIS OF SAMPLES FOR SECTION B

Sample number SMW-001 contains No Asbestos
Sample number SMW-002 contains No Asbestos
Sample number SMW-003 contains No Asbestos
Sample number SMW-004 contains No Asbestos
Sample number SMW-005 contains No Asbestos

Sample number INS-006 contains No Asbestos
Sample number INS-007 contains No Asbestos
Sample number INS-008 contains No Asbestos

Sample number SMW-009 contains No Asbestos

Sample number SMW-010 contains No Asbestos
Sample number SMW-011 contains No Asbestos
Sample number SMW-012 contains No Asbestos
Sample number SMW-013 contains No Asbestos

Sample number SMW-014 contains No Asbestos
Sample number SMW-015 contains No Asbestos
Sample number SMW-016 contains No Asbestos
Sample number SMW-017 contains No Asbestos
Sample number SMW-018 contains No Asbestos

Sample number FL-019 contains 30% Chrysotile Asbestos
Sample number FL-020 contains 30% Chrysotile Asbestos
Sample number FL-021 contains 30% Chrysotile Asbestos

Sample number FL-022 contains No Asbestos
Sample number FL-023 contains No Asbestos
Sample number FL-024 contains No Asbestos

Sample number CB-025 contains No Asbestos
Sample number CB-026 contains No Asbestos
Sample number CB-027 contains No Asbestos

SUMMARY OF FINDINGS

Some of the materials listed above are regulated asbestos containing building materials and do need to be removed by a licensed asbestos abatement contractor prior to any renovation or demolition activities.

THIS WOULD BE ALL OF THE WALLS AND CEILING IN THE LOUNG AREA OF SECTION A THIS IS A CLASS I CATEGORY 6 FRIABLE SURFACING MATERIAL APPROXIMATELY 400 SQ. FT.

THERE IS ALSO ASSUMED TRANSITE COUNTER TOPS IN THE CHEMISTRY LABORATORY LOCATED IN SECTION B THIS IS A NON-FRIABLE MISCELLANEOUS MATERIAL

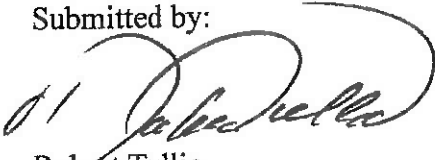
THERE IS ALSO FLOORING IN THE SAME CHEMISTRY LABORATORY IN SECTION B THIS IS A NON-FRIABLE MISCELLANEOUS MATERIAL APPROXIMATELY 400 SQ. FT.

ANALYTICAL PROCEDURES

The samples collected were delivered to F.R.S. A National Voluntary Laboratory Accreditation Program (NVLAP) asbestos laboratory, located in Denver Colorado for analysis with a 5-day turnaround time. All samples are archived for 30 days unless otherwise stipulated by the client. According to the Laboratory, the samples were analyzed in accordance with the E.P.A. Method 600/R-93/116.

The laboratory report is attached

Submitted by:



Robert Tullio

State of Colorado Asbestos Inspector #4589

** Any surfacing material that is blown on such as fire proofing, texture or block filler may have associated over spray that is visible or inaccessible around the areas where it had been applied.

*- The quantities that are listed in the list of homogeneous areas are just approximations and should not be used for bidding purposes.

Class:

I is Surfacing Material

II is TSI

III is Miscellaneous

Category:

1 damaged or significantly damaged TSI

2 damaged friable surfacing ACM

3 significantly damaged friable surfacing ACM

4 damaged or significantly damaged friable Miscellaneous ACM

5 ACBM with potential for damage

6 ACBM with potential for significant damage

7 any remaining friable ACBM or Friable suspected ACBM

If there is any construction debris that contains any amount of asbestos or is assumed to contain asbestos you must notify the land fill per the Hazard Communication Act. Such as roofing materials that are tar impregnated, weather proofing, floor tiles and mastic and any other OSHA material deemed to be non-friable. These materials must be kept non-friable you can not saw, sand, grind or in any other way pulverize said materials. Even if the material contains less than 1% asbestos then OSHA standards and regulations apply. All materials greater than 1% are considered asbestos containing and regulated by OSHA, EPA, State of Colorado and NESHA.

All samples are taken in a random Form Using a sampling Table. Using the EPA Pink Book Asbestos in buildings: Simplified Sampling Scheme For Friable Surfacing Materials. (1985)

If point counts are used the point count number shall be used per the EPA. When the point count is done the lab uses the EPA-600/R-93/116. Where the samples are read and the fiber has to cross the cross hairs to be counted. ND means that None were Detected. The fibers can be observed but not counted. If 1 fiber crossed the cross hairs it is counted as 0.25%, 2 fibers are counted as 0.50%, 3 fibers are counted as 0.75%, 4 fibers are counted as 1% and 5 fibers are counted as 1.25%. Per EPA any material 1.25% or greater is regulated. Any material 1% or less in Non Asbestos containing, but OSHA regulations still apply.

Client: Tulio Env. Ser.
 Address: 853 S. Vance St
B-102
 City: LAKEWOOD
 State: COLO. Zip: 80226
 Telephone: (720) 945-1066
 FAX*: ()
 Person to Contact: TOKEN7
 Alternate Phone: ()

FRS GEOTECH, INC.
Bulk Chain of Custody
 1441 W. 46th Ave., Suite 14
 Denver, CO 80211-2338
 (303)477-2559 or (800)386-3136
 FAX: (303)477-2580
 e-mail: frsgeo@ix.netcom.com
Asbestos **Mold**

FRS Lab No.: _____ Page 1 of 4
 Job Description: 425 N. Main
Dave Creek, CO
 P.O. #: _____
 Turnaround time requested:
 Rush 1-day 5-day Other: _____
 Return Samples _____
 *NOTE: Specifying a FAX number authorizes FRS Geotech, Inc. to FAX confidential reports to that number.

Accept/Reject	Sample Number	Sample Date	Section A.	Sample Description and Location
	SMW-001	1/28/22	Lounge	N. Wall
↓	.002			N.
↓	003			S.
	SMW-004		N. Bathroom	W. Wall
↓	005			
↓	006			
	SMW-007		S. Bathroom	N. Wall
↓	008			E.
↓	009			S.
	SMW-010		Main Offices	N. Wall
↓	011			S.
↓	012		East office	N.
↓	013			S.
↓	014		Big office	N.
	SMW-015		Main office	E. Wall
↓	016			W.
↓	017		East office	E.
↓	018			W.
↓	019		Big office	E.
	FL-020			main area flooring

Relinquished by (Name, date, time):
 1. A. [Signature] 2/2/22 1:25 pm
 2. _____
 Received by (Name, date, time):
 1. [Signature] 2/2/22 1:25 pm
 2. _____

Client: Trigo Eng. Serv.
 Address: 933 S. Vance St
B-102
 City: Littlewood
 State: CO Zip: 80226
 Telephone: (720) 445-1066
 FAX*: ()
 Person to Contact: Robert
 Alternate Phone: ()

FRS GEOTECH, INC.
Bulk Chain of Custody
 1441 W. 46th Ave., Suite 14
 Denver, CO 80211-2338
 (303)477-2559 or (800)386-3136
 FAX: (303)477-2580
 e-mail: frsgeo@ix.netcom.com
Asbestos **Mold**

FRS Lab No.: _____ Page 2 of 4
 Job Description: 925 W. main
Rock Creek, CO
 P.O. #: _____
 Turnaround time requested:
 Rush 1-day 5-day Other: _____
 Return Samples _____
 *NOTE: Specifying a FAX number authorizes FRS Geotech, Inc. to FAX confidential reports to that number.

Accept/Reject	Sample Number	Sample Date	Sample Description and Location
	FL-021	1/18/22	main area flooring
↓	022		
	SMW-023		old board Room E. Wall
↓	024		
↓	025		
↓	026		Entry Hall N. Wall
↓	027		
	SMW-028		Board Room W. Wall
↓	029		
↓	030		
	SMC-031		Boiler Room Ceiling
↓	032		
↓	033		
	SMC-034		Entry Hall Ceiling
↓	035		
↓	036		
	CT-037		Bathroom Ceiling
↓	038		
↓	039		
	SMW-040		Bathroom S. Wall

Relinquished by (Name, date, time):
 1. [Signature] 1/22/22 1:15pm
 2. _____
 Received by (Name, date, time):
 1. [Signature] 2/2/22 1:25pm
 2. _____

Client: Tullio Eng. Serv
 Address: 833 S. Vance St
B-102
 City: Wallerwood
 State: Colo. Zip: 80224
 Telephone: (770) 495-1046
 FAX*: ()
 Person to Contact: Robert
 Alternate Phone: ()

FRS GEOTECH, INC.
Bulk Chain of Custody
 1441 W. 46th Ave., Suite 14
 Denver, CO 80211-2338
 (303)477-2559 or (800)386-3136
 FAX: (303)477-2580
 e-mail: frsgeo@ix.netcom.com
Asbestos **Mold**

FRS Lab No.: _____ Page 3 of 4
 Job Description: 425 N. Main
Dove Creek, CO
 P.O. #: _____
 Turnaround time requested:
 Rush 1-day 5-day Other: _____
 Return Samples _____
 *NOTE: Specifying a FAX number
 authorizes FRS Geotech, Inc. to FAX
 confidential reports to that number.

Accept/ Reject	Sample Number	Sample Date	Sample Description and Location
	SMW-041	1/28/02	Bathroom S. Wall
	↓ 042		↓ ↓ ↓
	JC-043		Joint Comp drywall
	↓ 044		↓ ↓ ↓
	↓ 045		
	FL-046		Joint Bathroom flooring
	↓ 047		↓ ↓
	↓ 048		
			Section B
	SMW-001		Hallway N. Wall
	↓ 002		↓ S. ↓
	↓ 003		↓ N. ↓
	↓ 004		↓ S. ↓
	↓ 005		↓ N. ↓
	Ins-006		Attic Ins.
	↓ 007		↓ ↓
	↓ 008		
	SMW-009		Maintenance Office N. Wall
	↓ 010		↓ S. ↓
	↓ 011		↓ W. ↓
Relinquished by (Name, date, time)			Received by (Name, date, time):
1. <u>[Signature]</u> 2/2/22 1:26 pm			1. <u>[Signature]</u> 2/2/22 1:26 pm
2. _____			2. _____

Client: Tulco Env. Serv.
 Address: 933 S. Vance St
13-102
 City: Lake Wood
 State: Colo. Zip: 80226
 Telephone: (710) 445-1044
 FAX*: ()
 Person to Contact: Robert
 Alternate Phone: ()

FRS GEOTECH, INC.
Bulk Chain of Custody
 1441 W. 46th Ave., Suite 14
 Denver, CO 80211-2338
 (303)477-2559 or (800)386-3136
 FAX: (303)477-2580
 e-mail: frsgco@ix.netcom.com
Asbestos X Mold

FRS Lab No.: Page 7 of 4
 Job Description: 425 N. Main
Dove Creek, CO
 P.O. #:
 Turnaround time requested:
 Rush 1-day 5-day X Other:
 Return Samples
 *NOTE: Specifying a FAX number
 authorizes FRS Geotech, Inc. to FAX
 confidential reports to that number.

Accept/ Reject	Sample Number	Sample Date	Sample Description and Location
	<u>smw-012</u>	<u>1/28/22</u>	<u>Maintenance office E. Wall</u>
	<u>↓ -013</u>		<u>↓ ↓ ↓</u>
	<u>smw-014</u>		<u>Storage W. Wall</u>
	<u>↓ 015</u>		<u>↓ ↓ ↓</u>
	<u>↓ 016</u>		<u>N. ↓</u>
	<u>↓ 017</u>		<u>E. ↓</u>
	<u>↓ 018</u>		<u>S. ↓</u>
	<u>FL-019</u>		<u>Chem Lab floor</u>
	<u>↓ 020</u>		<u>↓ ↓ ↓</u>
	<u>↓ 021</u>		<u>↓ ↓ ↓</u>
	<u>FL-022</u>		<u>Chem Lab floor</u>
	<u>↓ 023</u>		<u>↓ ↓ ↓</u>
	<u>↓ 024</u>		<u>↓ ↓ ↓</u>
	<u>CB-025</u>		<u>Chancel Boards</u>
	<u>↓ 026</u>		<u>↓ ↓</u>
	<u>↓ 027</u>		<u>↓ ↓</u>

Relinquished by (Name, date, time): Robert 2/2/22 1:26pm
 Received by (Name, date, time): 2/2/22 1:26pm

FRS GEOTECH, INC.
1441 W. 46th Avenue, Ste. 14
Denver, CO 80211-2338

**RESULTS OF BULK ASBESTOS SAMPLE ANALYSIS
BY POLARIZED LIGHT MICROSCOPY (PLM) EPA-600/R-93/116**

Phone: (303) 477-2559
(800) 386-3136
Fax: (303) 477-2580
e-mail: frsgeo@ix.netcom.com

Lab No.: 126572
Page 1 of 9

Client: Tullio Environmental Services
Project: 425(A) N. Main, Dove Creek, CO

Sample No. [layer] Description	Volume (%)	Sample Date	Nonasbestos Fibrous Material (%)	Asbestos Minerals (%)	Summary (%)
SMW-001 Section (A) lounge N wall [white perlitic base plaster & finish plaster with multi-color paints]	100%	01/28/22	Fiberglass Trace <1% Cellulose Synthetics Others	Amosite Anthophyllite Chrysotile Crocidolite Trem./Act.	Total Asbestos: None Detected Other Fibrous Material Trace <1% Nonfibrous Material 99
SMW-002 Section (A) lounge N wall [white finish plaster with multi-color paints]	100%	01/28/22	Fiberglass Cellulose Trace <1% Synthetics Others	Amosite Anthophyllite Chrysotile Crocidolite Trem./Act.	Total Asbestos: None Detected Other Fibrous Material Trace <1% Nonfibrous Material 99
SMW-003* Section (A) lounge S wall [2 layers]	Composite (100%)	01/28/22	Fiberglass Cellulose Trace <1% Synthetics Others	Amosite Anthophyllite Chrysotile Crocidolite Trem./Act.	Total Asbestos: 2 Other Fibrous Material Trace <1% Nonfibrous Material 97
SMW-003.1A1 [White texture]	Layer vol. = 95%	01/28/22	Fiberglass Cellulose Trace <1% Synthetics Others	Amosite Anthophyllite Chrysotile Crocidolite Trem./Act.	Total Asbestos: 2 Other Fibrous Material Trace <1% Nonfibrous Material 97
SMW-003.1B1 [Multi-color paints]	Layer vol. = 5%	01/28/22	Fiberglass Cellulose Synthetics Others	Amosite Anthophyllite Chrysotile Crocidolite Trem./Act.	Total Asbestos: None Detected Other Fibrous Material - Nonfibrous Material 100
SMW-004 Section (A) N bathroom W wall [white perlitic base plaster with white paint]	100%	01/28/22	Fiberglass Cellulose Trace <1% Synthetics Others	Amosite Anthophyllite Chrysotile Crocidolite Trem./Act.	Total Asbestos: None Detected Other Fibrous Material Trace <1% Nonfibrous Material 99

* Composite analysis (multilayered sample, see individual layer analyses).

Analyst(s): *Kathleen Tullio*
Kathleen Tullio

FRS GEOTECH, INC.
1441 W. 46th Avenue, Ste. 14
Denver, CO 80211-2338

**RESULTS OF BULK ASBESTOS SAMPLE ANALYSIS
BY POLARIZED LIGHT MICROSCOPY (PLM) EPA-600/R-93/116**

Phone: (303) 477-2559
(800) 386-3136
Fax: (303) 477-2580
e-mail: frsgeo@ix.netcom.com

Lab No.: 126572
Page 2 of 9

Client: Tullio Environmental Services
Project: 425(A) N. Main, Dove Creek, CO

Sample No. [layer] Description	Volume (%)	Sample Date	Nonasbestos Fibrous Material (%)	Asbestos Minerals (%)	Summary (%)
SMYV-005 Section (A) N bathroom W wall [white perlitic plaster with white paint]	100%	01/28/22	Fiberglass Cellulose Synthetics Others	Amosite Anthophyllite Chrysotile Crocidolite Trem./Act.	Total Asbestos: None Detected Other Fibrous Material: Trace <1% Nonfibrous Material: 99
SMYV-006 Section (A) N bathroom W wall [white perlitic plaster with white paint]	100%	01/28/22	Fiberglass Cellulose Synthetics Others	Amosite Anthophyllite Chrysotile Crocidolite Trem./Act.	Total Asbestos: None Detected Other Fibrous Material: Trace <1% Nonfibrous Material: 99
SMYV-007 Section (A) S bathroom N wall [pink drywall with white joint compound or texture & paint]	100%	01/28/22	Fiberglass Cellulose Synthetics Others	Amosite Anthophyllite Chrysotile Crocidolite Trem./Act.	Total Asbestos: None Detected Other Fibrous Material: 10 Nonfibrous Material: 90
SMYV-008 Section (A) S bathroom E wall [white texture between multi-color paints]	100%	01/28/22	Fiberglass Cellulose Synthetics Others	Amosite Anthophyllite Chrysotile Crocidolite Trem./Act.	Total Asbestos: None Detected Other Fibrous Material: Trace <1% Nonfibrous Material: 99
SMYV-009 Section (A) S bathroom S wall [white texture between multi-color paints]	100%	01/28/22	Fiberglass Cellulose Synthetics Others	Amosite Anthophyllite Chrysotile Crocidolite Trem./Act.	Total Asbestos: None Detected Other Fibrous Material: Trace <1% Nonfibrous Material: 99
SMYV-010 Section (A) main offices N wall [white drywall with white texture & paint]	100%	01/28/22	Fiberglass Cellulose Synthetics Others	Amosite Anthophyllite Chrysotile Crocidolite Trem./Act.	Total Asbestos: None Detected Other Fibrous Material: 11 Nonfibrous Material: 89

* Composite analysis (multilayered sample, see individual layer analyses).

Kathleen Tullio

Analyst(s):

Kathleen Tullio

Completed: 02/08/2022

FRS GEOTECH, INC.
1441 W. 46th Avenue, Ste. 14
Denver, CO 80211-2338

**RESULTS OF BULK ASBESTOS SAMPLE ANALYSIS
BY POLARIZED LIGHT MICROSCOPY (PLM) EPA-600/R-93/116**

Phone: (303) 477-2559
(800) 386-3136
Fax: (303) 477-2580
e-mail: frgeo@ix.netcom.com

Lab No.: 126572
Page 3 of 9

Client: Tullio Environmental Services
Project: 425(A) N. Main, Dove Creek, CO

Sample No. [layer]	Description	Volume (%)	Sample Date	Nonasbestos Fibrous Material (%)	Asbestos Minerals (%)	Summary (%)
SMW-011	Section (A) main offices S wall [white drywall with white texture & paint]	100%	01/28/22	Fiberglass Trace <1% Cellulose 10 Synthetics Others	Amosite Anthrophyllite Chrysotile Crocidolite Trem./Act.	Total Asbestos: None Detected Other Fibrous Material 11 Nonfibrous Material 89
SMW-012	Section (A) east office N wall [white texture between multi-color paints]	100%	01/28/22	Fiberglass Trace <1% Cellulose 10 Synthetics Others	Amosite Anthrophyllite Chrysotile Crocidolite Trem./Act.	Total Asbestos: None Detected Other Fibrous Material 11 Nonfibrous Material 89
SMW-013	Section (A) east office S wall [white drywall, texture & paint]	100%	01/28/22	Fiberglass Trace <1% Cellulose 10 Synthetics Others	Amosite Anthrophyllite Chrysotile Crocidolite Trem./Act.	Total Asbestos: None Detected Other Fibrous Material 11 Nonfibrous Material 89
SMW-014	Section (A) big office N wall [white drywall, texture & paint]	100%	01/28/22	Fiberglass Trace <1% Cellulose 10 Synthetics Others	Amosite Anthrophyllite Chrysotile Crocidolite Trem./Act.	Total Asbestos: None Detected Other Fibrous Material 11 Nonfibrous Material 89
SMW-015	Section (A) main office E wall [multi-color paints]	100%	01/28/22	Fiberglass Trace <1% Cellulose 10 Synthetics Others	Amosite Anthrophyllite Chrysotile Crocidolite Trem./Act.	Total Asbestos: None Detected Other Fibrous Material Trace <1% Nonfibrous Material 99
SMW-016	Section (A) main office W wall [multi-color paints]	100%	01/28/22	Fiberglass Cellulose Synthetics Others	Amosite Anthrophyllite Chrysotile Crocidolite Trem./Act.	Total Asbestos: None Detected Other Fibrous Material Nonfibrous Material 100

* Composite analysis (multilayered sample, see individual layer analyses).

Analyst(s): *Kathleen Tullio*
Kathleen Tullio

Completed: 02/08/2022

FIRS GEOTECH, INC.
1441 W. 46th Avenue, Ste. 14
Denver, CO 80211-2338

**RESULTS OF BULK ASBESTOS SAMPLE ANALYSIS
BY POLARIZED LIGHT MICROSCOPY (PLM) EPA-600/R-93/116**

Phone: (303) 477-2559
(800) 386-3136
Fax: (303) 477-2580
e-mail: frsgeo@ix.netcom.com

Client: Tullio Environmental Services
Project: 425(A) N. Main, Dove Creek, CO

Lab No.: 126572
Page 4 of 9

Sample No. [layer] Description	Volume (%)	Sample Date	Nonasbestos Fibrous Material (%)	Asbestos Minerals (%)	Summary (%)
SMW-017 Section (A) east office E wall [beige block filler with multi-color paints]	100%	01/28/22	Fiberglass Cellulose Trace <1% Synthetics Others	Amosite Anthophyllite Chrysotile Crocidolite Trem./Act.	Total Asbestos: None Detected Other Fibrous Material Trace <1% Nonfibrous Material 99
SMW-018 Section (A) east office W wall [beige block filler with multi-color paints]	100%	01/28/22	Fiberglass Cellulose Trace <1% Synthetics Others	Amosite Anthophyllite Chrysotile Crocidolite Trem./Act.	Total Asbestos: None Detected Other Fibrous Material Trace <1% Nonfibrous Material 99
SMW-019 Section (A) big office E wall [beige block filler with multi-color paints]	100%	01/28/22	Fiberglass Cellulose Trace <1% Synthetics Others	Amosite Anthophyllite Chrysotile Crocidolite Trem./Act.	Total Asbestos: None Detected Other Fibrous Material Trace <1% Nonfibrous Material 99
FL-020 Section (A) main area flooring [multi-color blue carpet with colorless adhesive]	100%	01/28/22	Fiberglass Cellulose Trace <1% Synthetics Others	Amosite Anthophyllite Chrysotile Crocidolite Trem./Act.	Total Asbestos: None Detected Other Fibrous Material 36 Nonfibrous Material 64
FL-021 Section (A) main area flooring [multi-blue color carpet with colorless adhesive]	100%	01/28/22	Fiberglass Cellulose Trace <1% Synthetics Others	Amosite Anthophyllite Chrysotile Crocidolite Trem./Act.	Total Asbestos: None Detected Other Fibrous Material 36 Nonfibrous Material 64
FL-022 Section (A) main area flooring [multi-blue color carpet with colorless adhesive]	100%	01/28/22	Fiberglass Cellulose Synthetics Others	Amosite Anthophyllite Chrysotile Crocidolite Trem./Act.	Total Asbestos: None Detected Other Fibrous Material 37 Nonfibrous Material 63

* Composite analysis (multilayered sample, see individual layer analyses).

Analys(s):

Kathleen Tullio

Kathleen Tullio

Completed: 02/08/2022

FRS GEOTECH, INC.
1441 W. 46th Avenue, Ste. 14
Denver, CO 80211-2338

**RESULTS OF BULK ASBESTOS SAMPLE ANALYSIS
BY POLARIZED LIGHT MICROSCOPY (PLM) EPA-600/R-93/116**

Phone: (303) 477-2559
(800) 386-3136
Fax: (303) 477-2580
e-mail: frsgeo@ix.netcom.com

Client: Tullio Environmental Services
Project: 425(A) N. Main, Dove Creek, CO

Lab No.: 126572
Page 5 of 9

Sample No. [layer]	Description	Volume (%)	Sample Date	Nonasbestos Fibrous Material (%)	Asbestos Minerals (%)	Summary (%)
SMW-023	Section (A) old board room E wall [white drywall with texture & paint]	100%	01/28/22	Fiberglass Trace <1% Cellulose 10 Synthetics Others	Amosite Anthophyllite Chrysotile Crocidolite Trem./Act.	Total Asbestos: None Detected Other Fibrous Material 11 Nonfibrous Material 89
SMW-024	Section (A) old board room E wall [white drywall with texture & paint]	100%	01/28/22	Fiberglass Trace <1% Cellulose 10 Synthetics Others	Amosite Anthophyllite Chrysotile Crocidolite Trem./Act.	Total Asbestos: None Detected Other Fibrous Material 11 Nonfibrous Material 89
SMW-025	Section (A) old board room E wall [white drywall with texture & paint]	100%	01/28/22	Fiberglass Trace <1% Cellulose 10 Synthetics Others	Amosite Anthophyllite Chrysotile Crocidolite Trem./Act.	Total Asbestos: None Detected Other Fibrous Material 11 Nonfibrous Material 89
SMW-026	Section (A) entry hall N wall [white drywall with texture & paint]	100%	01/28/22	Fiberglass Trace <1% Cellulose 10 Synthetics Others	Amosite Anthophyllite Chrysotile Crocidolite Trem./Act.	Total Asbestos: None Detected Other Fibrous Material 11 Nonfibrous Material 89
SMW-027	Section (A) entry hall N wall [white drywall with texture & paint]	100%	01/28/22	Fiberglass Trace <1% Cellulose 10 Synthetics Others	Amosite Anthophyllite Chrysotile Crocidolite Trem./Act.	Total Asbestos: None Detected Other Fibrous Material 11 Nonfibrous Material 89
SMW-028	Section (A) board room W wall [wood with tan adhesive & multi-color paints]	100%	01/28/22	Fiberglass Cellulose 2 Synthetics Others	Amosite Anthophyllite Chrysotile Crocidolite Trem./Act.	Total Asbestos: None Detected Other Fibrous Material 2 Nonfibrous Material 98

* Composite analysis (multilayered sample, see individual layer analyses).

Analyst(s):

Kathleen Tullio

Kathleen Tullio

Completed: 02/08/2022

FRS GEOTECH, INC.
1441 W. 46th Avenue, Ste. 14
Denver, CO 80211-2338

**RESULTS OF BULK ASBESTOS SAMPLE ANALYSIS
BY POLARIZED LIGHT MICROSCOPY (PLM) EPA-600/R-93/116**

Phone: (303) 477-2559
(800) 386-3136
Fax: (303) 477-2580
e-mail: frsgeo@ix.netcom.com

Client: Tullio Environmental Services
Project: 425(A) N. Main, Dove Creek, CO

Lab No.: 126572
Page 6 of 9

Sample No. [layer]	Description	Volume (%)	Sample Date	Nonasbestos Fibrous Material (%)	Asbestos Minerals (%)	Summary (%)
SMW-029	Section (A) board room W wall [wood with tan adhesive & multi-color paints]	100%	01/28/22	Fiberglass _____ Cellulose _____ 2 Synthetics _____ Others _____	Amosite _____ Anthophyllite _____ Chrysotile _____ Crocidolite _____ Trem./Act. _____	Total Asbestos: None Detected Other Fibrous Material 2 Nonfibrous Material 98
SMW-030	Section (A) board room W wall [wood with tan adhesive & multi-color paints]	100%	01/28/22	Fiberglass _____ Cellulose _____ 2 Synthetics _____ Others _____	Amosite _____ Anthophyllite _____ Chrysotile _____ Crocidolite _____ Trem./Act. _____	Total Asbestos: None Detected Other Fibrous Material 2 Nonfibrous Material 98
SMC-031	Section (A) boiler room ceiling [white drywall with white joint compound or texture & paint]	100%	01/28/22	Fiberglass _____ Cellulose _____ 10 Synthetics _____ Others _____	Amosite _____ Anthophyllite _____ Chrysotile _____ Crocidolite _____ Trem./Act. _____	Total Asbestos: None Detected Other Fibrous Material 10 Nonfibrous Material 90
SMC-032	Section (A) boiler room ceiling [white drywall with white joint compound or texture & paint]	100%	01/28/22	Fiberglass _____ Cellulose _____ 10 Synthetics _____ Others _____	Amosite _____ Anthophyllite _____ Chrysotile _____ Crocidolite _____ Trem./Act. _____	Total Asbestos: None Detected Other Fibrous Material 10 Nonfibrous Material 90
SMC-033	Section (A) boiler room ceiling [white drywall with white joint compound or texture & paint]	100%	01/28/22	Fiberglass _____ Cellulose _____ 10 Synthetics _____ Others _____	Amosite _____ Anthophyllite _____ Chrysotile _____ Crocidolite _____ Trem./Act. _____	Total Asbestos: None Detected Other Fibrous Material 10 Nonfibrous Material 90
SMC-034	Section (A) entry hall ceiling [pink drywall with white texture & paint]	100%	01/28/22	Fiberglass _____ Cellulose _____ 10 Synthetics _____ Others _____	Amosite _____ Anthophyllite _____ Chrysotile _____ Crocidolite _____ Trem./Act. _____	Total Asbestos: None Detected Other Fibrous Material 12 Nonfibrous Material 88

* Composite analysis (multilayered sample, see individual layer analyses).

Analyst(s): *Kathleen Tullio*
Kathleen Tullio

Completed: 02/08/2022

FRS GEOTECH, INC.
1441 W. 46th Avenue, Ste. 14
Denver, CO 80211-2338

**RESULTS OF BULK ASBESTOS SAMPLE ANALYSIS
BY POLARIZED LIGHT MICROSCOPY (PLM) EPA-600/R-93/1116**

Phone: (303) 477-2559
(800) 386-3136
Fax: (303) 477-2580
e-mail: ftsgeo@ix.netcom.com

Client: Tullio Environmental Services
Project: 425(A) N. Main, Dove Creek, CO

Lab No.: 126572
Page 7 of 9

Sample No. [layer] Description	Volume (%)	Sample Date	Nonasbestos Fibrous Material (%)	Asbestos Minerals (%)	Summary (%)
SMC-035 Section (A) entry hall ceiling [pink drywall with white texture & paint]	100%	01/28/22	Fiberglass _____ 2 Cellulose _____ 10 Synthetics _____ Others _____	Amosite _____ Anthophyllite _____ Chrysotile _____ Crocidolite _____ Trem./Act. _____	Total Asbestos: None Detected Other Fibrous Material 12 Nonfibrous Material 88
SMC-036 Section (A) entry hall ceiling [pink drywall with white texture & paint]	100%	01/28/22	Fiberglass _____ 2 Cellulose _____ 10 Synthetics _____ Others _____	Amosite _____ Anthophyllite _____ Chrysotile _____ Crocidolite _____ Trem./Act. _____	Total Asbestos: None Detected Other Fibrous Material 12 Nonfibrous Material 88
CT-037 Section (A) bathroom ceiling [brown ceiling tile with white paint]	100%	01/28/22	Fiberglass _____ Cellulose _____ 95 Synthetics _____ Others _____	Amosite _____ Anthophyllite _____ Chrysotile _____ Crocidolite _____ Trem./Act. _____	Total Asbestos: None Detected Other Fibrous Material 95 Nonfibrous Material 5
CT-038 Section (A) bathroom ceiling [brown ceiling tile with white paint]	100%	01/28/22	Fiberglass _____ Cellulose _____ 95 Synthetics _____ Others _____	Amosite _____ Anthophyllite _____ Chrysotile _____ Crocidolite _____ Trem./Act. _____	Total Asbestos: None Detected Other Fibrous Material 95 Nonfibrous Material 5
CT-039 Section (A) bathroom ceiling [brown ceiling tile with white paint]	100%	01/28/22	Fiberglass _____ Cellulose _____ 95 Synthetics _____ Others _____	Amosite _____ Anthophyllite _____ Chrysotile _____ Crocidolite _____ Trem./Act. _____	Total Asbestos: None Detected Other Fibrous Material 95 Nonfibrous Material 5
SMW-040 Section (A) bathroom S wall [white drywall, texture & paint]	100%	01/28/22	Fiberglass Trace <1% Cellulose _____ 10 Synthetics _____ Others _____	Amosite _____ Anthophyllite _____ Chrysotile _____ Crocidolite _____ Trem./Act. _____	Total Asbestos: None Detected Other Fibrous Material 11 Nonfibrous Material 89

* Composite analysis (multilayered sample, see individual layer analyses).

Analyst(s):

Kathleen Tullio

Kathleen Tullio

Completed: 02/08/2022

RESULTS OF BULK ASBESTOS SAMPLE ANALYSIS
BY POLARIZED LIGHT MICROSCOPY (PLM) EPA-600/R-93/116

Client: Tullio Environmental Services
Project: 425(A) N. Main, Dove Creek, CO

Lab No.: 126572
Page 8 of 9

Sample No. [layer]	Description	Volume (%)	Sample Date	Nonasbestos Fibrous Material (%)	Asbestos Minerals (%)	Summary (%)
SMV-041	Section (A) bathroom S wall [white drywall, texture & paint]	100%	01/28/22	Fiberglass Trace <1% Cellulose 10 Synthetics Others.	Amosite Anthophyllite Chrysotile Crocidolite Trem./Act.	Total Asbestos: None Detected Other Fibrous Material 11 Nonfibrous Material 89
SMV-042	Section (A) bathroom S wall [white texture, tape & paint]	100%	01/28/22	Fiberglass Cellulose 10 Synthetics Others.	Amosite Anthophyllite Chrysotile Crocidolite Trem./Act.	Total Asbestos: None Detected Other Fibrous Material 20 Nonfibrous Material 80
JC-043	Section (A) joint compound/drywall [white drywall, joint compound, tape, joint compound or texture & paint]	100%	01/28/22	Fiberglass Trace <1% Cellulose 10 Synthetics Others.	Amosite Anthophyllite Chrysotile Crocidolite Trem./Act.	Total Asbestos: None Detected Other Fibrous Material 11 Nonfibrous Material 89
JC-044	Section (A) joint compound/drywall [white drywall, joint compound, tape, joint compound or texture & paint]	100%	01/28/22	Fiberglass Trace <1% Cellulose 10 Synthetics Others.	Amosite Anthophyllite Chrysotile Crocidolite Trem./Act.	Total Asbestos: None Detected Other Fibrous Material 11 Nonfibrous Material 89
JC-045	Section (A) joint compound/drywall [white drywall, joint compound, tape, joint compound or texture & paint]	100%	01/28/22	Fiberglass Trace <1% Cellulose 10 Synthetics Others.	Amosite Anthophyllite Chrysotile Crocidolite Trem./Act.	Total Asbestos: None Detected Other Fibrous Material 11 Nonfibrous Material 89
FL-046	Section (A) bathroom flooring [beige sheet vinyl flooring with colorless adhesive]	100%	01/28/22	Fiberglass Cellulose 2 Synthetics Others.	Amosite Anthophyllite Chrysotile Crocidolite Trem./Act.	Total Asbestos: None Detected Other Fibrous Material 12 Nonfibrous Material 88

* Composite analysis (multilayered sample, see individual layer analyses).

Analyst(s): Kathleen Tullio

Kathleen Tullio

FRS GEOTECH, INC.
1441 W. 46th Avenue, Ste. 14
Denver, CO 80211-2338

**RESULTS OF BULK ASBESTOS SAMPLE ANALYSIS
BY POLARIZED LIGHT MICROSCOPY (PLM) EPA-600/R-93/116**

Phone: (303) 477-2559
(800) 386-3136
Fax: (303) 477-2580
e-mail: frsgeo@ix.netcom.com

Lab No.: 126572
Page 9 of 9

Client: Tullio Environmental Services
Project: 425(A) N. Main, Dove Creek, CO

Sample No. [layer]	Description	Volume (%)	Sample Date	Nonsbestos Fibrous Material (%)	Asbestos Minerals (%)	Summary (%)
FL-047	Section (A) bathroom flooring [beige sheet vinyl flooring with colorless adhesive]	100%	01/28/22	Fiberglass 10 Cellulose 2 Synthetics Others	Amosite Anthophyllite Chrysotile Crocidolite Trem./Act.	Total Asbestos: None Detected Other Fibrous Material 12 Nonfibrous Material 88
FL-048	Section (A) bathroom flooring [beige sheet vinyl flooring with colorless adhesive]	100%	01/28/22	Fiberglass 10 Cellulose 2 Synthetics Others	Amosite Anthophyllite Chrysotile Crocidolite Trem./Act.	Total Asbestos: None Detected Other Fibrous Material 12 Nonfibrous Material 88

* Composite analysis (multilayered sample, see individual layer analyses).

Analyst(s): *Kathleen Tullio*
Kathleen Tullio

FIRS GEOTECH, INC.
1441 W. 46th Avenue, Ste. 14
Denver, CO 80211-2338

**RESULTS OF BULK ASBESTOS SAMPLE ANALYSIS
BY POLARIZED LIGHT MICROSCOPY (PLM) EPA-600/R-93/116**

Phone: (303) 477-2559
(800) 386-3136
Fax: (303) 477-2580
e-mail: frsgeo@ix.netcom.com

Client: Tullio Environmental Services
Project: 425(B) N. Main, Dove Creek, CO

Lab No.: 126573
Page 1 of 5

Sample No. [layer] Description	Volume (%)	Sample Date	Nonasbestos Fibrous Material (%)	Asbestos Minerals (%)	Summary (%)
SMWV-001 Section (B) hallway N wall [white texture and paint]	100%	01/28/22	Fiberglass Cellulose Synthetics Others	Amosite Anthophyllite Chrysotile Crocidolite Trem./Act.	Total Asbestos: None Detected Other Fibrous Material -- Nonfibrous Material 100
SMWV-002 Section (B) hallway S wall [white texture and paint]	100%	01/28/22	Fiberglass Cellulose Synthetics Others	Amosite Anthophyllite Chrysotile Crocidolite Trem./Act.	Total Asbestos: None Detected Other Fibrous Material -- Nonfibrous Material 100
SMWV-003 Section (B) hallway N wall [white texture and paint]	100%	01/28/22	Fiberglass Cellulose Synthetics Others	Amosite Anthophyllite Chrysotile Crocidolite Trem./Act.	Total Asbestos: None Detected Other Fibrous Material -- Nonfibrous Material 100
SMWV-004 Section (B) hallway S wall [white texture and paint]	100%	01/28/22	Fiberglass Cellulose Synthetics Others	Amosite Anthophyllite Chrysotile Crocidolite Trem./Act.	Total Asbestos: None Detected Other Fibrous Material -- Nonfibrous Material 100
SMWV-005 Section (B) hallway N wall [white texture and paint]	100%	01/28/22	Fiberglass Cellulose Synthetics Others	Amosite Anthophyllite Chrysotile Crocidolite Trem./Act.	Total Asbestos: None Detected Other Fibrous Material -- Nonfibrous Material 100
INS-006 Section (B) attic insulation [yellow foam with black and gray coatings]	100%	01/28/22	Fiberglass Cellulose Synthetics Others	Amosite Anthophyllite Chrysotile Crocidolite Trem./Act.	Total Asbestos: None Detected Other Fibrous Material -- Nonfibrous Material 100

* Composite analysis (multilayered sample, see individual layer analyses).

Analyst(s): *David A. Schroeder*
David A. Schroeder

Completed: 02/04/2022

FRS GEOTECH, INC.
1441 W. 46th Avenue, Ste. 14
Denver, CO 80211-2338

**RESULTS OF BULK ASBESTOS SAMPLE ANALYSIS
BY POLARIZED LIGHT MICROSCOPY (PLM) EPA-600/R-93/116**

Phone: (303) 477-2559
(800) 386-3136
Fax: (303) 477-2580
e-mail: frsgeo@ix.netcom.com

Lab No.: 126573
Page 2 of 5

Client: Tullio Environmental Services
Project: 425(B) N. Main, Dove Creek, CO

Sample No. [layer] Description	Volume (%)	Sample Date	Nonasbestos Fibrous Material (%)	Asbestos Minerals (%)	Summary (%)
INS-007 Section (B) attic insulation [yellow foam with black and gray coatings]	100%	01/28/22	Fiberglass Cellulose Synthetics Others	Amosite Anthophyllite Chrysotile Crocidolite Trem./Act.	Total Asbestos: None Detected Other Fibrous Material -- Nonfibrous Material 100
INS-008 Section (B) attic insulation [yellow foam with black and gray coatings]	100%	01/28/22	Fiberglass Cellulose Synthetics Others	Amosite Anthophyllite Chrysotile Crocidolite Trem./Act.	Total Asbestos: None Detected Other Fibrous Material -- Nonfibrous Material 100
SMYV-009 Section (B) maintenance office N wall [multiple colors of paints on wood]	100%	01/28/22	Fiberglass Cellulose Synthetics Others	Amosite Anthophyllite Chrysotile Crocidolite Trem./Act.	Total Asbestos: None Detected Other Fibrous Material 60 Nonfibrous Material 40
SMYV-010 Section (B) maintenance office S wall [multiple colors of paints on wood]	100%	01/28/22	Fiberglass Cellulose Synthetics Others	Amosite Anthophyllite Chrysotile Crocidolite Trem./Act.	Total Asbestos: None Detected Other Fibrous Material 60 Nonfibrous Material 40
SMYV-011 Section (B) maintenance office W wall [white paints]	100%	01/28/22	Fiberglass Cellulose Synthetics Others	Amosite Anthophyllite Chrysotile Crocidolite Trem./Act.	Total Asbestos: None Detected Other Fibrous Material -- Nonfibrous Material 100
SMYV-012 Section (B) maintenance office E wall [white joint compound or texture and paints]	100%	01/28/22	Fiberglass Cellulose Synthetics Others	Amosite Anthophyllite Chrysotile Crocidolite Trem./Act.	Total Asbestos: None Detected Other Fibrous Material -- Nonfibrous Material 100

* Composite analysis (multilayered sample, see individual layer analyses).

Analyst(s): *David A. Schroeder*
David A. Schroeder

Completed: 02/04/2022

FRS GEOTECH, INC.
 1441 W. 46th Avenue, Ste. 14
 Denver, CO 80211-2338

**RESULTS OF BULK ASBESTOS SAMPLE ANALYSIS
 BY POLARIZED LIGHT MICROSCOPY (PLM) EPA-600/R-93/116**

Phone: (303) 477-2559
 (800) 386-3136
 Fax: (303) 477-2580
 e-mail: frsgeo@ix.netcom.com

Lab No.: 126573
 Page 3 of 5

Client: Tullio Environmental Services
 Project: 425(B) N. Main, Dove Creek, CO

Sample No. [layer] Description	Volume (%)	Sample Date	Nonasbestos Fibrous Material (%)	Asbestos Minerals (%)	Summary (%)
SMW-013 Section (B) maintenance office E wall [white paints]	100%	01/28/22	Fiberglass Cellulose Synthetics Others	Amosite Anthophyllite Chrysotile Crocidolite Trem./Act.	Total Asbestos: None Detected Other Fibrous Material -- Nonfibrous Material 100
SMW-014 Section (B) storage W wall [white texture and paint]	100%	01/28/22	Fiberglass Cellulose Synthetics Others	Amosite Anthophyllite Chrysotile Crocidolite Trem./Act.	Total Asbestos: None Detected Other Fibrous Material -- Nonfibrous Material 100
SMW-015 Section (B) storage W wall [white texture and paint]	100%	01/28/22	Fiberglass Cellulose Synthetics Others	Amosite Anthophyllite Chrysotile Crocidolite Trem./Act.	Total Asbestos: None Detected Other Fibrous Material -- Nonfibrous Material 100
SMW-016 Section (B) storage N wall [2 white textures and paints]	100%	01/28/22	Fiberglass Cellulose Synthetics Others	Amosite Anthophyllite Chrysotile Crocidolite Trem./Act.	Total Asbestos: None Detected Other Fibrous Material -- Nonfibrous Material 100
SMW-017 Section (B) storage E wall [white texture and paint]	100%	01/28/22	Fiberglass Cellulose Synthetics Others	Amosite Anthophyllite Chrysotile Crocidolite Trem./Act.	Total Asbestos: None Detected Other Fibrous Material -- Nonfibrous Material 100
SMW-018 Section (B) storage S wall [white texture and paint]	100%	01/28/22	Fiberglass Cellulose Synthetics Others	Amosite Anthophyllite Chrysotile Crocidolite Trem./Act.	Total Asbestos: None Detected Other Fibrous Material -- Nonfibrous Material 100

* Composite analysis (multilayered sample, see individual layer analyses).

Analyst(s): *David A. Schroeder*
 David A. Schroeder

FRS GEOTECH, INC.
1441 W. 46th Avenue, Ste. 14
Denver, CO 80211-2338

RESULTS OF BULK ASBESTOS SAMPLE ANALYSIS
BY POLARIZED LIGHT MICROSCOPY (PLM) EPA-600/R-93/116

Phone: (303) 477-2559
(800) 386-3136
Fax: (303) 477-2580
e-mail: frsgec@ix.netcom.com

Lab No.: 126573
Page 4 of 5

Client: Tullio Environmental Services
Project: 425(B) N. Main, Dove Creek, CO

Sample No. [layer]	Description	Volume (%)	Sample Date	Nonasbestos Fibrous Material (%)	Asbestos Minerals (%)	Summary (%)
FL-019	Section (B) chem lab floor [beige vinyl flooring with inseparable yellow adhesive]	100%	01/28/22	Fiberglass Cellulose Synthetics Others	Amosite Anthophyllite Chrysotile 30 Crocidolite Trem./Act.	Total Asbestos: 30 Other Fibrous Material Nonfibrous Material 70
FL-020	Section (B) chem lab floor [beige vinyl flooring with inseparable yellow adhesive]	100%	01/28/22	Fiberglass Cellulose Synthetics Others	Amosite Anthophyllite Chrysotile 30 Crocidolite Trem./Act.	Total Asbestos: 30 Other Fibrous Material Nonfibrous Material 70
FL-021	Section (B) chem lab floor [beige vinyl flooring]	100%	01/28/22	Fiberglass Cellulose Synthetics Others	Amosite Anthophyllite Chrysotile 30 Crocidolite Trem./Act.	Total Asbestos: 30 Other Fibrous Material Nonfibrous Material 70
FL-022	Section (B) chem lab floor [white floor tile with amber adhesive]	100%	01/28/22	Fiberglass Cellulose Synthetics Others	Amosite Anthophyllite Chrysotile Crocidolite Trem./Act.	Total Asbestos: None Detected Other Fibrous Material Nonfibrous Material 100
FL-023	Section (B) chem lab floor [white floor tile with amber adhesive]	100%	01/28/22	Fiberglass Cellulose Synthetics Others	Amosite Anthophyllite Chrysotile Crocidolite Trem./Act.	Total Asbestos: None Detected Other Fibrous Material Nonfibrous Material 100
FL-024	Section (B) chem lab floor [white floor tile with amber adhesive]	100%	01/28/22	Fiberglass Cellulose Synthetics Others	Amosite Anthophyllite Chrysotile Crocidolite Trem./Act.	Total Asbestos: None Detected Other Fibrous Material Nonfibrous Material 100

* Composite analysis (multilayered sample, see individual layer analyses).

Analyst(s):

David A. Schroeder

David A. Schroeder

Completed: 02/04/2022

FRS GEOTECH, INC.
 1441 W. 46th Avenue, Ste. 14
 Denver, CO 80211-2338

**RESULTS OF BULK ASBESTOS SAMPLE ANALYSIS
 BY POLARIZED LIGHT MICROSCOPY (PLM) EPA-600/R-93/116**

Phone: (303) 477-2559
 (800) 386-3136
 Fax: (303) 477-2580
 e-mail: frsgeo@ix.netcom.com

Lab No.: **126573**
 Page 5 of 5

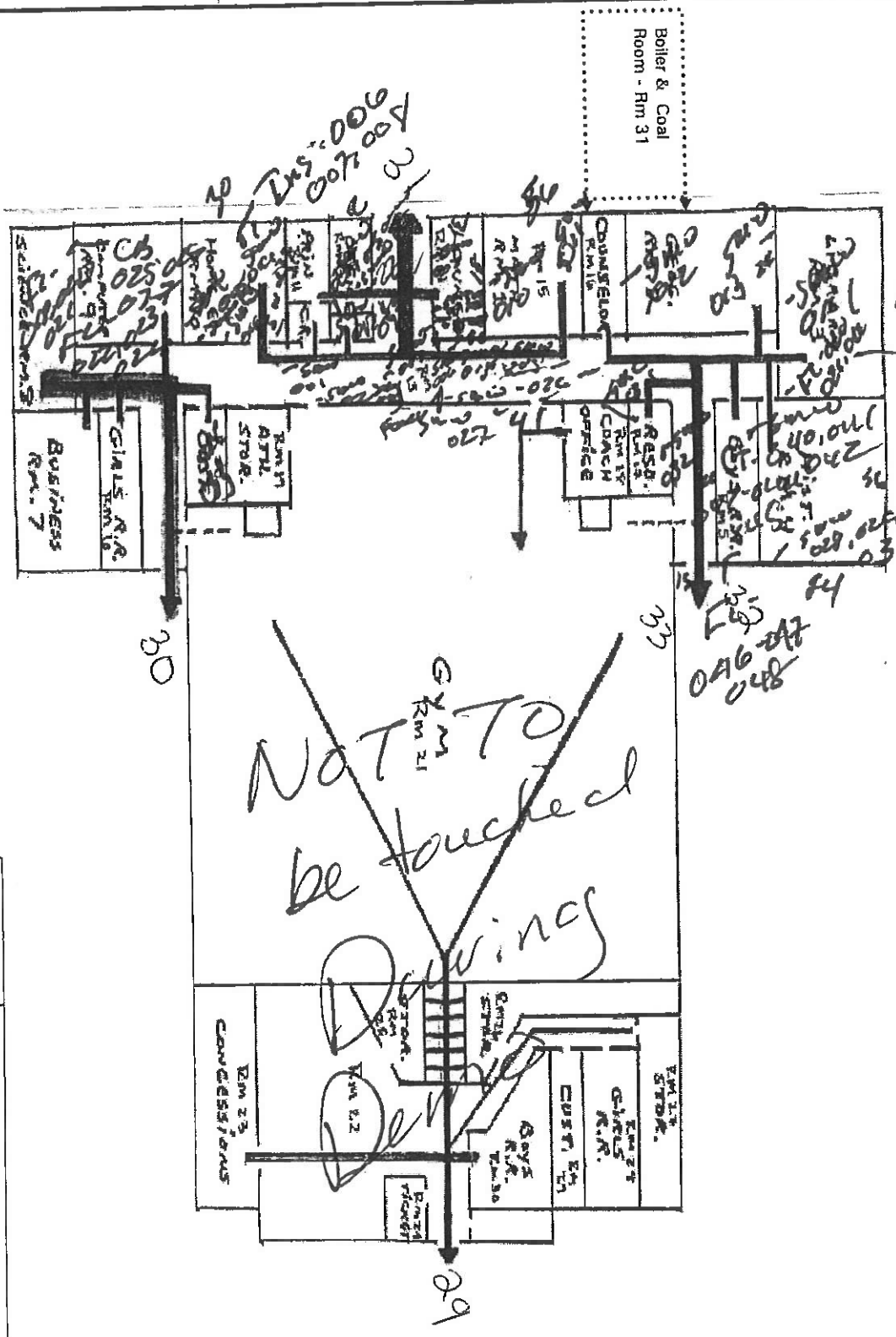
Client: Tullio Environmental Services
 Project: 425(B) N. Main, Dove Creek, CO


Sample No. [layer]	Description	Volume (%)	Sample Date	Nonasbestos Fibrous Material (%)	Asbestos Minerals (%)	Summary (%)
CB-025	Section (B) chalk boards [green with brown fiberboard backing with black back, brown adhesive and black mastic]	100%	01/28/22	Fiberglass Cellulose Synthetics Others	Amosite Anthophyllite Chrysotile Crocidolite Trem./Act.	Total Asbestos: None Detected Other Fibrous Material: 65 Nontfibrous Material: 35
CB-026	Section (B) chalk boards [green with brown fiberboard backing with black back, brown adhesive and black mastic]	100%	01/28/22	Fiberglass Cellulose Synthetics Others	Amosite Anthophyllite Chrysotile Crocidolite Trem./Act.	Total Asbestos: None Detected Other Fibrous Material: 65 Nontfibrous Material: 35
CB-027	Section (B) chalk boards [green with brown fiberboard backing with black back and brown adhesive]	100%	01/28/22	Fiberglass Cellulose Synthetics Others	Amosite Anthophyllite Chrysotile Crocidolite Trem./Act.	Total Asbestos: None Detected Other Fibrous Material: 65 Nontfibrous Material: 35

* Composite analysis (multilayered sample, see individual layer analyses).

Analyst(s): *David A. Schroeder*
 David A. Schroeder

Figure 1 – Functional Space Diagram
 Memorial Hall (Campus #1- Building #1)
 425 North Main
 Dove Creek, Colorado



 N Not to Scale	Dolores County School District RE-2(J)	
	Three Year AHERA Reinspection	
	Western Technologies Inc.	
	Job No. 3125JM050	Date: August 19, 2015

2

2

13

13